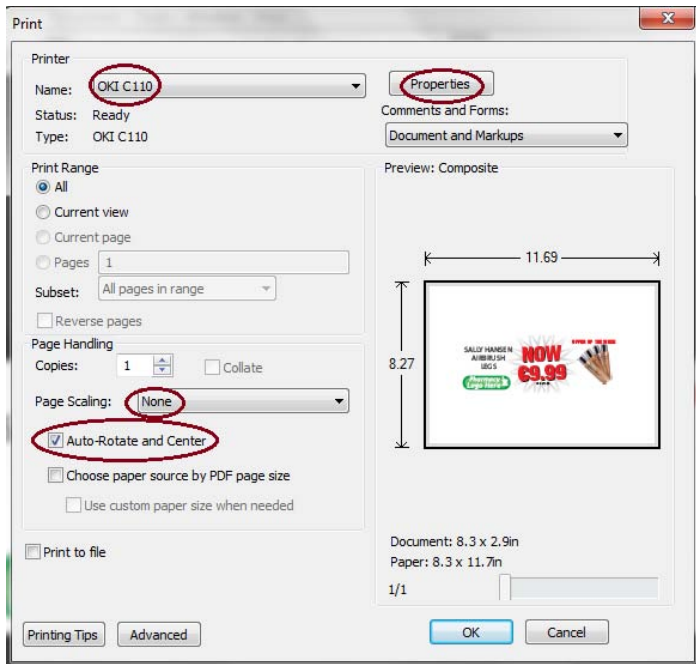
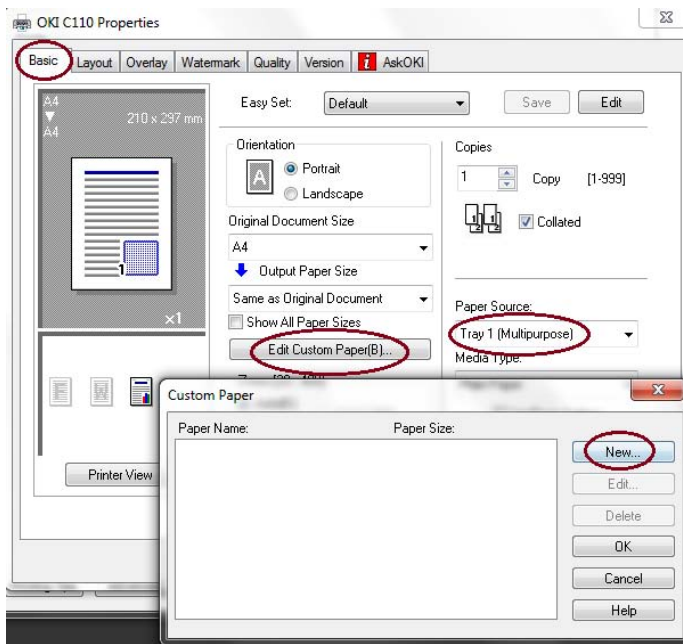


# HOW TO CHANGE YOUR PRINTER SETTINGS FOR EACH TEMPLATE DESIGN:



## Shelf-Talkers:

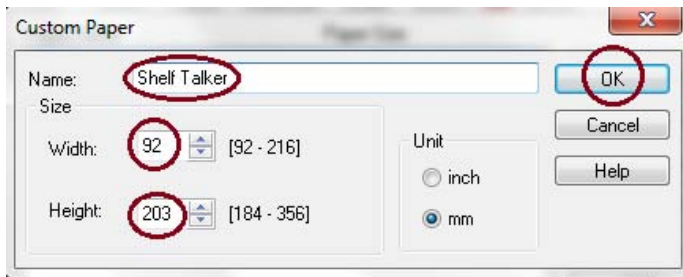
1. Select OKI printer
2. Select None at Page Scaling
3. Click Auto-Rotate and Centre
4. Click Properties



## Shelf-Talkers:

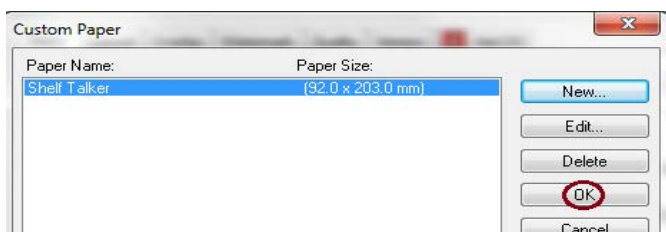
From the **Basic** tab:

1. Set Paper Source to Tray 1 (Multipurpose)
2. Click on Edit Custom Paper (B)
3. Click New



## Shelf-Talkers:

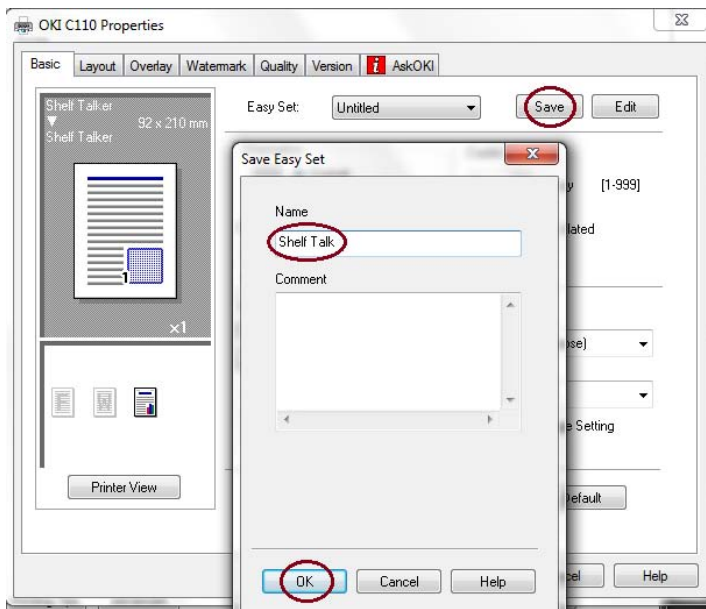
4. Type Shelf Talker in Name
5. Change width to 92
6. Change height to 203
7. Click OK



## Shelf-Talkers:

Shelf Talker has now been added as a Custom Paper

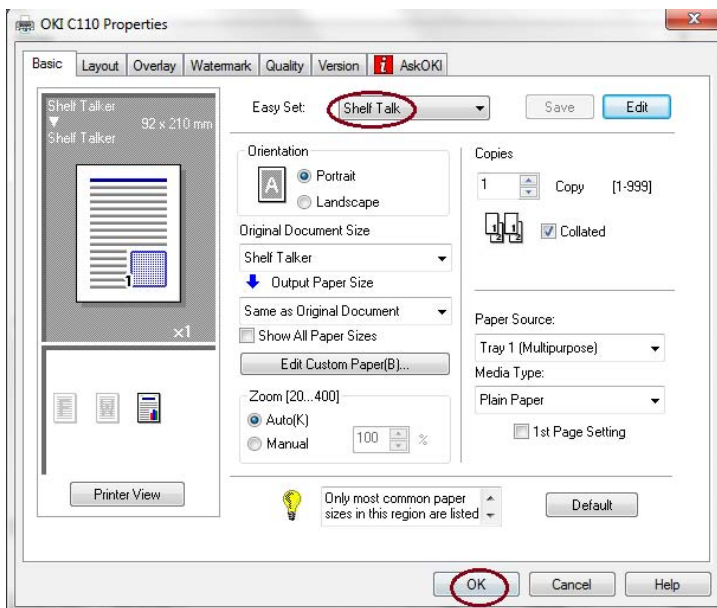
12. Click OK



### Shelf-Talkers:

You have now been brought back into the Basic tab.

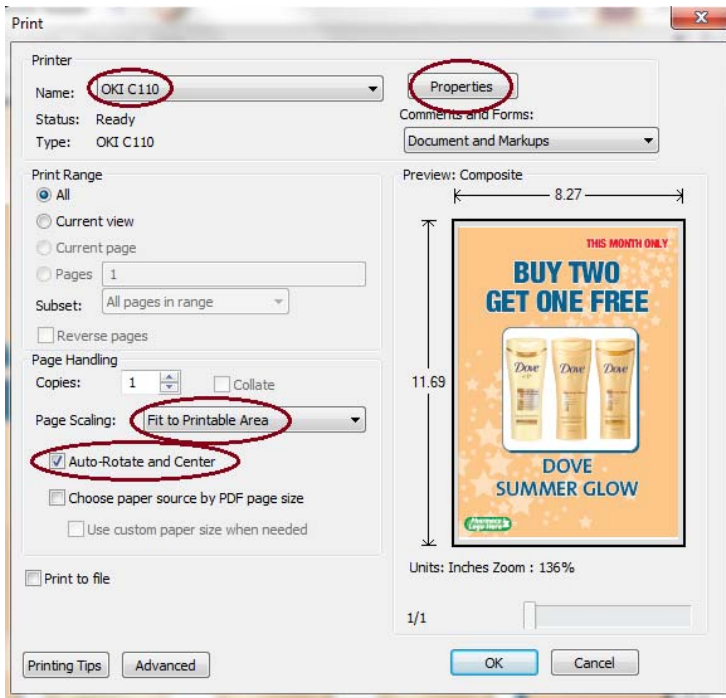
13. Click Save
14. Type Shelf Talk into Name
15. Click OK



### Shelf-Talkers:

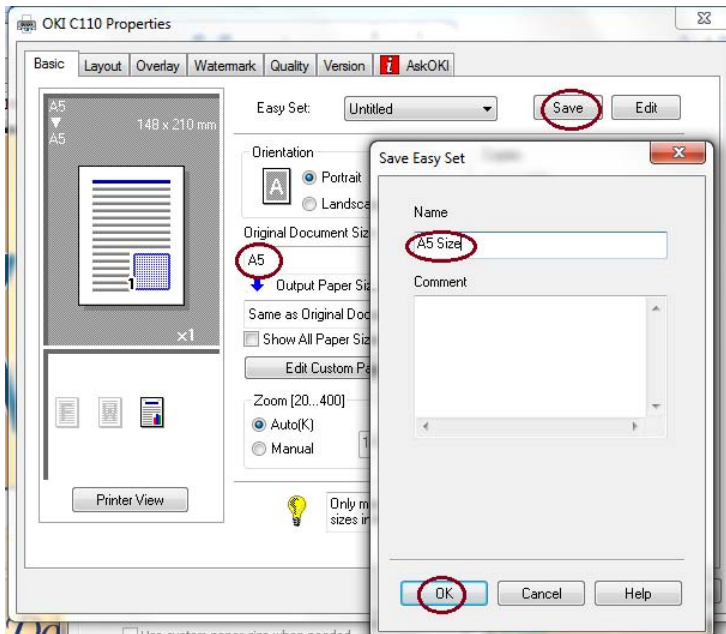
Shelf Talk has now been added as an Easy Set. This means whenever you want to print shelf talkers you will simply select this from the drop-down menu.

16. Click OK out of the Basic tab
17. Click OK to print



### A5 Flyer & Sign:

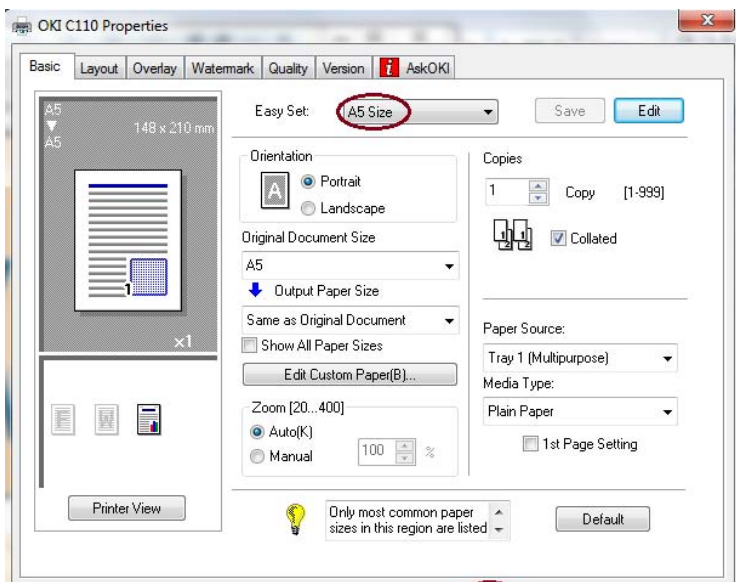
1. Select OKI printer
2. Select Fit to Printable Area
3. Click Auto-Rotate and Centre
4. Click Properties



### A5 Flyer & Sign:

From the **Basic** tab:

5. Select A5 from the drop down menu at Original Document Size
6. Click Save
7. Type A5 Size at name
8. Click OK



### A5 Flyer & Sign:

A5 Size has now been added as an Easy Set. This means whenever you want to print A5 Size you will simply select this from the drop-down menu.

9. Click OK out of the Basic tab
10. Click OK to print