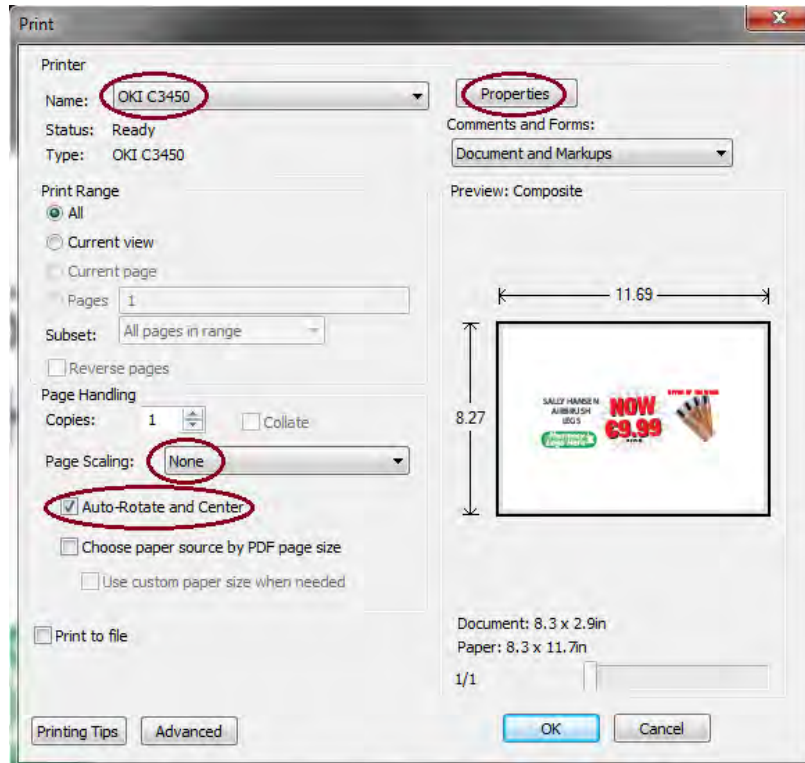


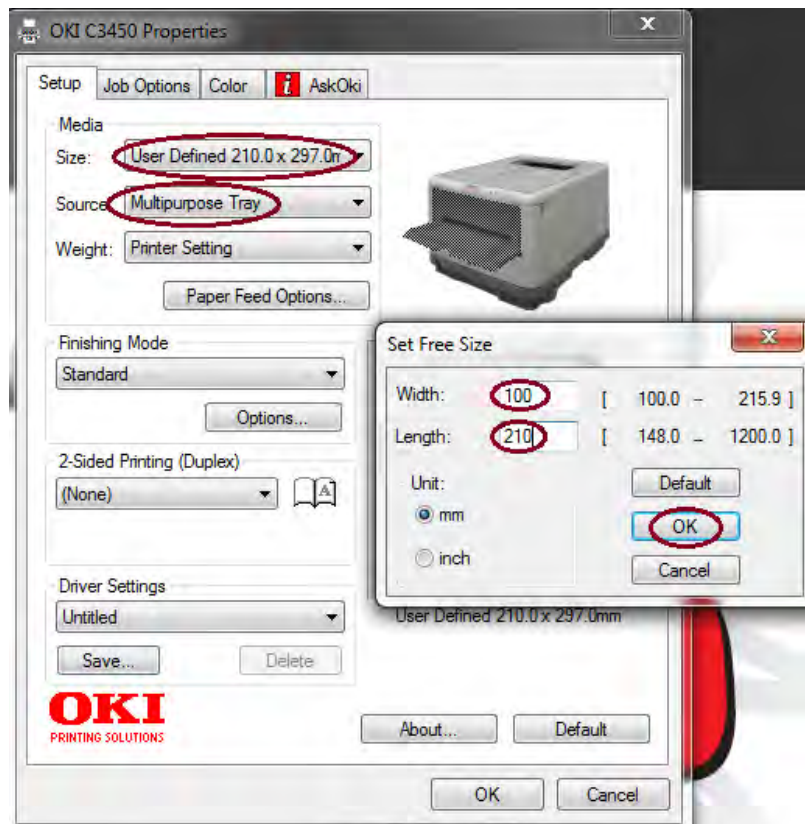
Printer Settings for PharmaPOS Templates

(for use with OKI C3450 Colour Laser Printer)



Shelf-Talkers:

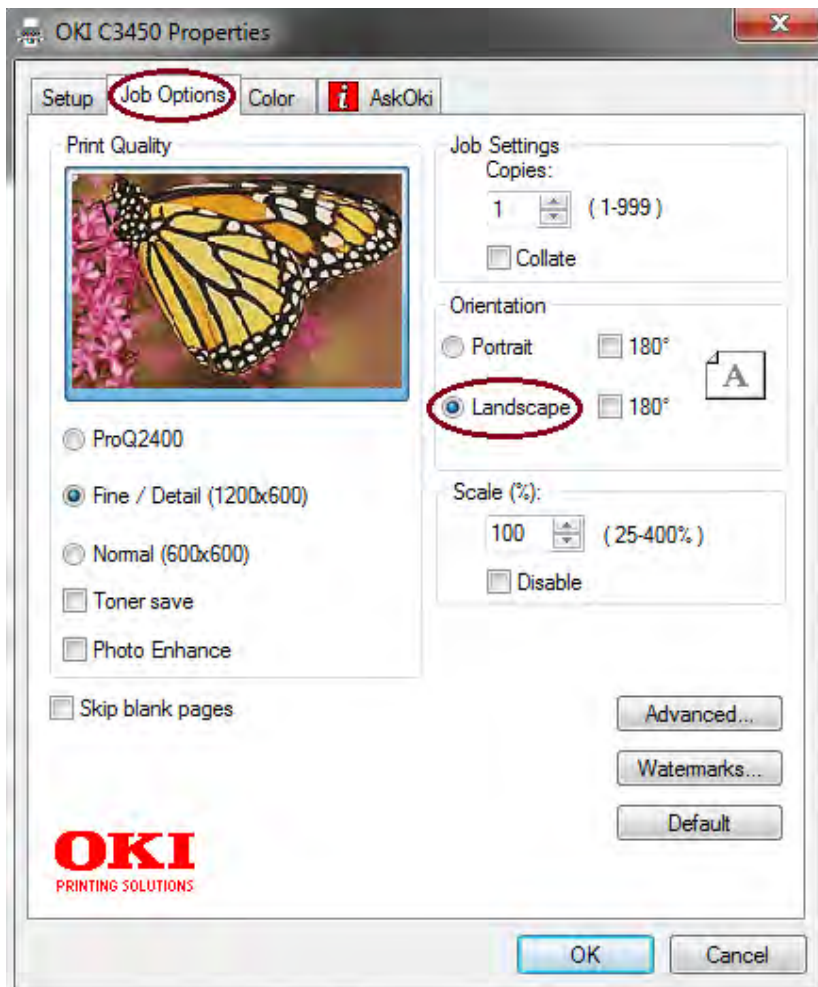
1. Select OKI printer
2. Select None at Page Scaling
3. Click Auto-Rotate and Centre
4. Click Properties



Shelf-Talkers:

From the **Setup** tab:

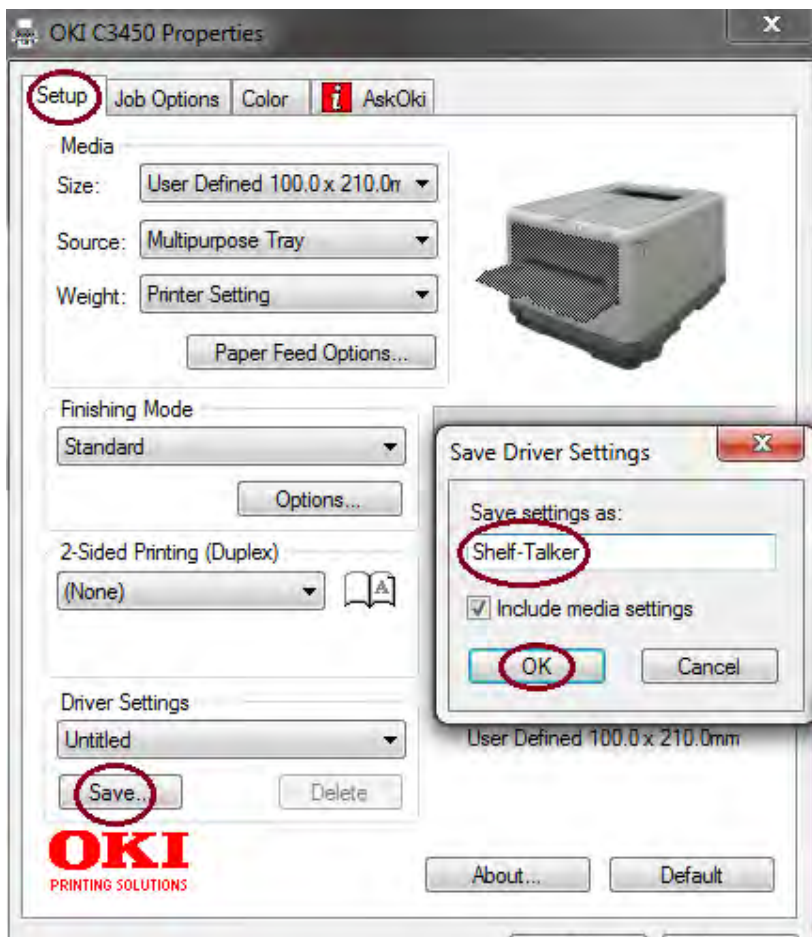
5. Media Size - select **User Defined** from the drop down menu
6. Change width to 100mm, length to 210mm
7. Click OK
8. Media Source - select Multipurpose Tray from the drop down menu



Shelf-Talkers:

In the **Job Options** tab:

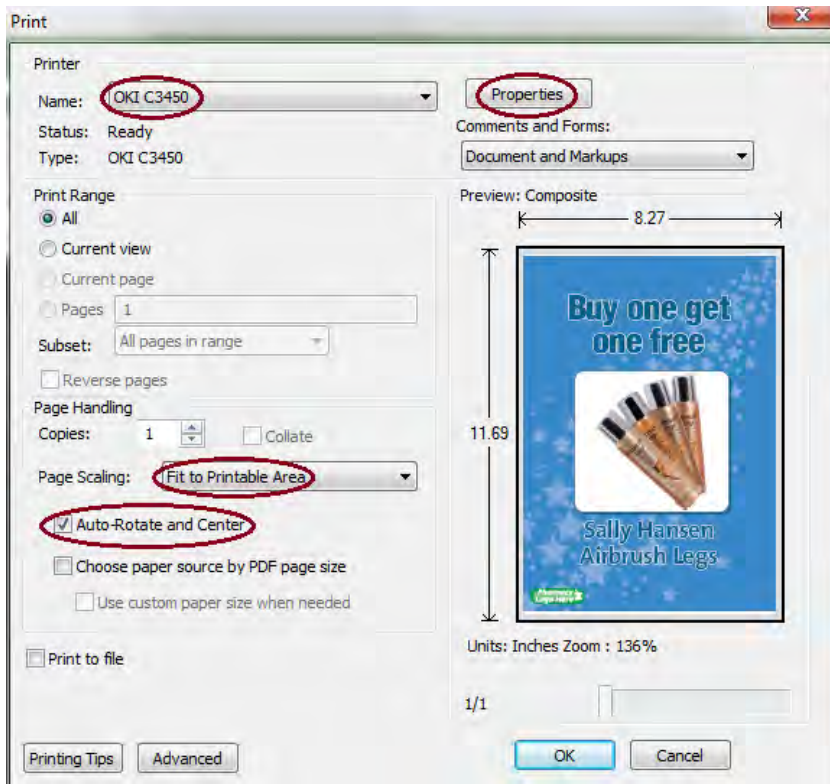
9. Click Landscape orientation



Shelf-Talkers:

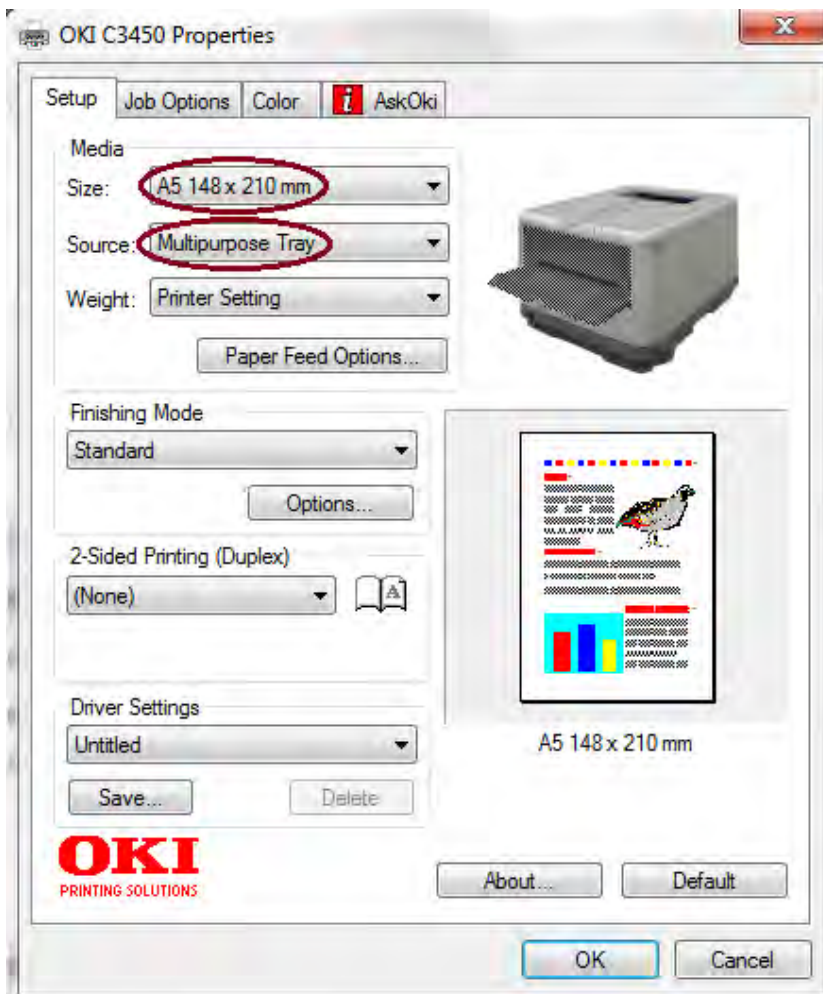
10. Click back to **Setup** tab
11. Click **Save** in **Driver Settings**
12. Save as Shelf-Talker
13. Click OK
14. Click OK out of Properties Screen
15. Click OK to print

NOTE: Shelf-Talker has now been added to your OKI properties. When printing your next shelf-talker simply go to the drop down menu in **Driver Settings** and choose Shelf-Talker.



A5 Flyer & Sign:

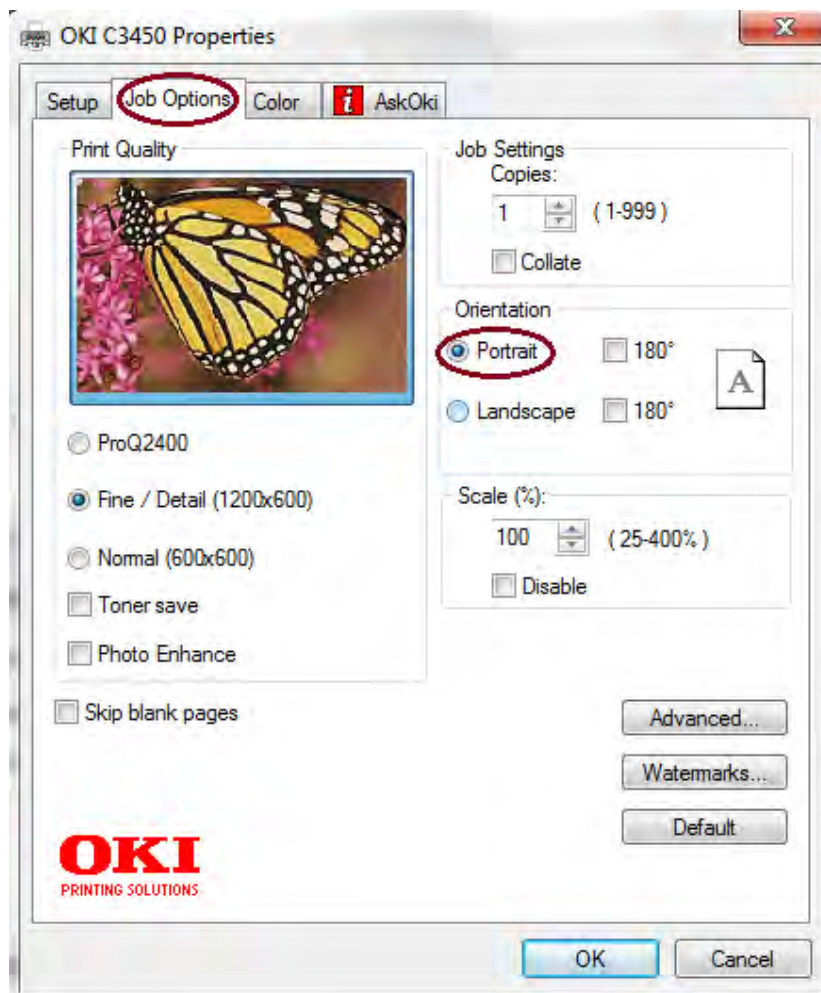
1. Select OKI printer
2. Select Fit to Printable Area at Page Scaling
3. Click Auto-Rotate and Centre
4. Click Properties



A5 Flyer & Sign:

From the **Setup** tab:

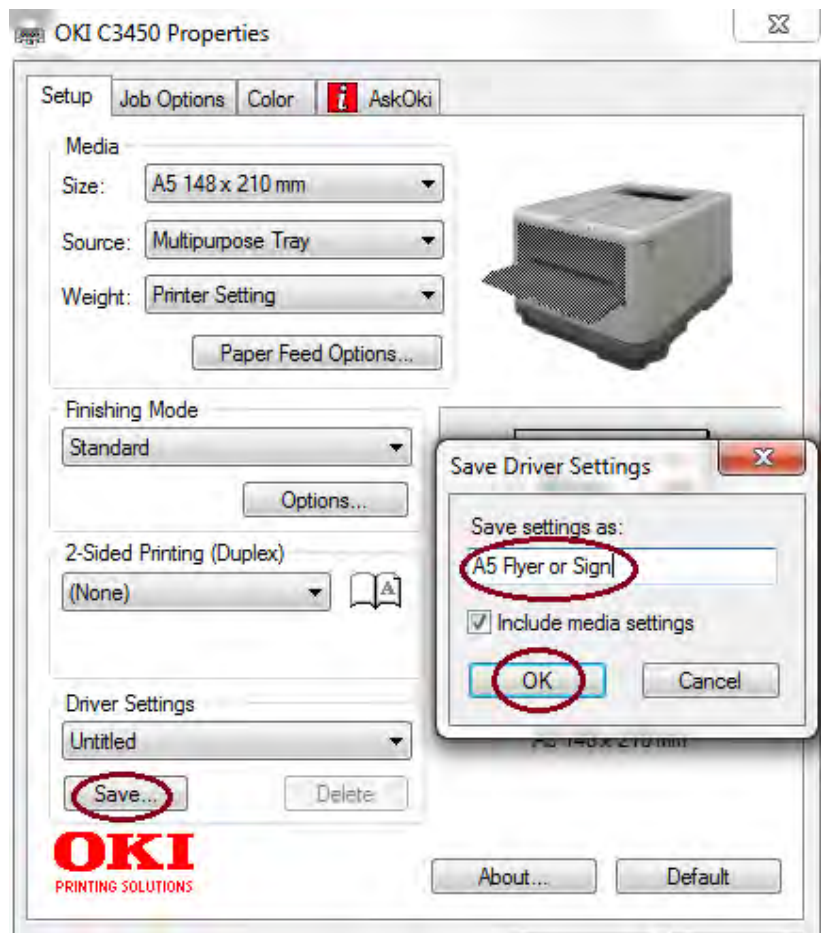
5. Media Size - select A5 148x210mm
6. Media Source - select Multipurpose Tray from drop down menu.
Note: You can also print from the lower paper tray on media up to 120gsm



A5 Flyer & Sign:

In the **Job Options** tab:

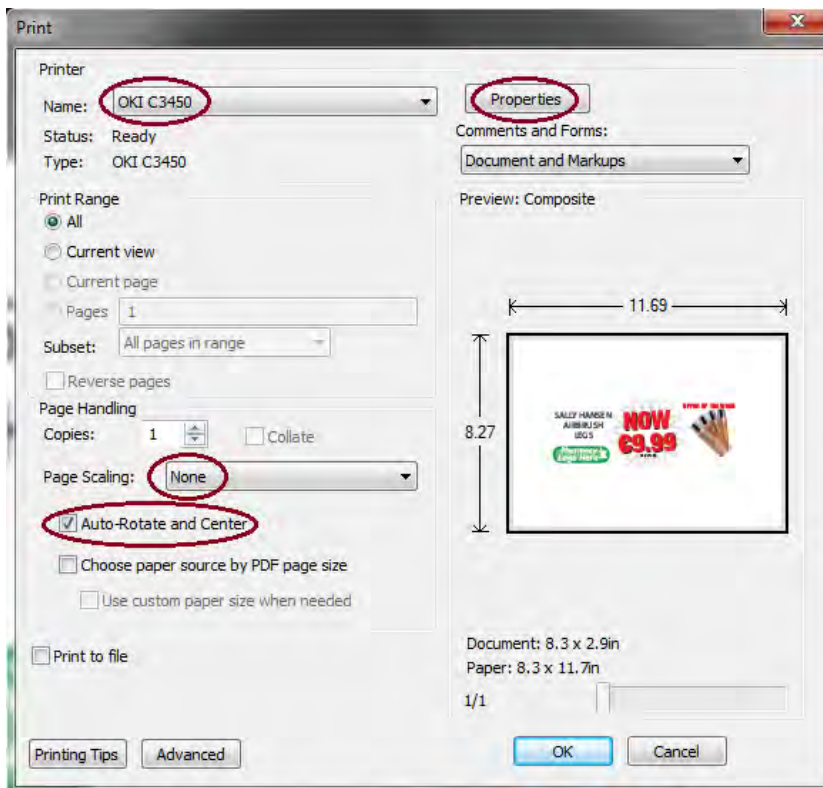
7. Click Portrait orientation



A5 Flyer & Sign:

8. Click back into **Setup**
9. Click **Save** in **Driver Settings**
10. Save as A5 Flyer or Sign
11. Click OK
12. Click OK out of Properties Screen
13. Click OK to print

NOTE: A5 Size has now been added to your OKI properties. When printing your next A5 flyer or sign simply go to the drop down menu in **Driver Settings** and choose A5 Flyer or Sign.



90cm Banners:

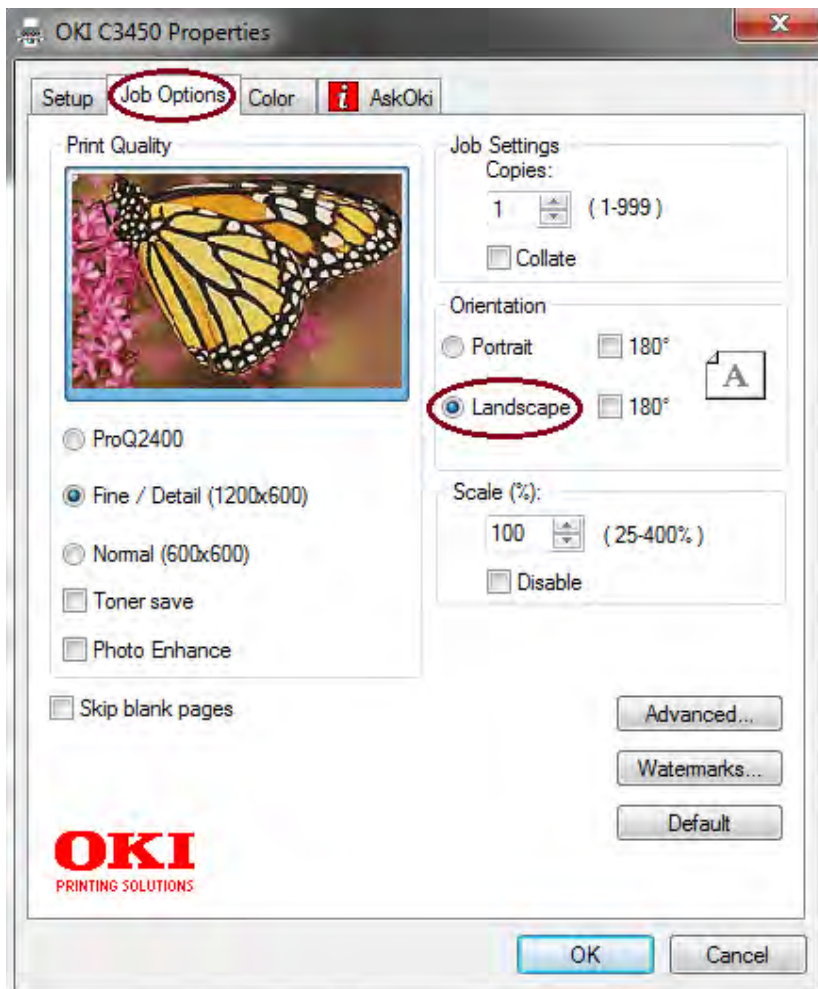
1. Select OKI printer
2. Select None at Page Scaling
3. Click Auto-Rotate and Centre
4. Click Properties



90cm Banners:

In the **Setup** tab:

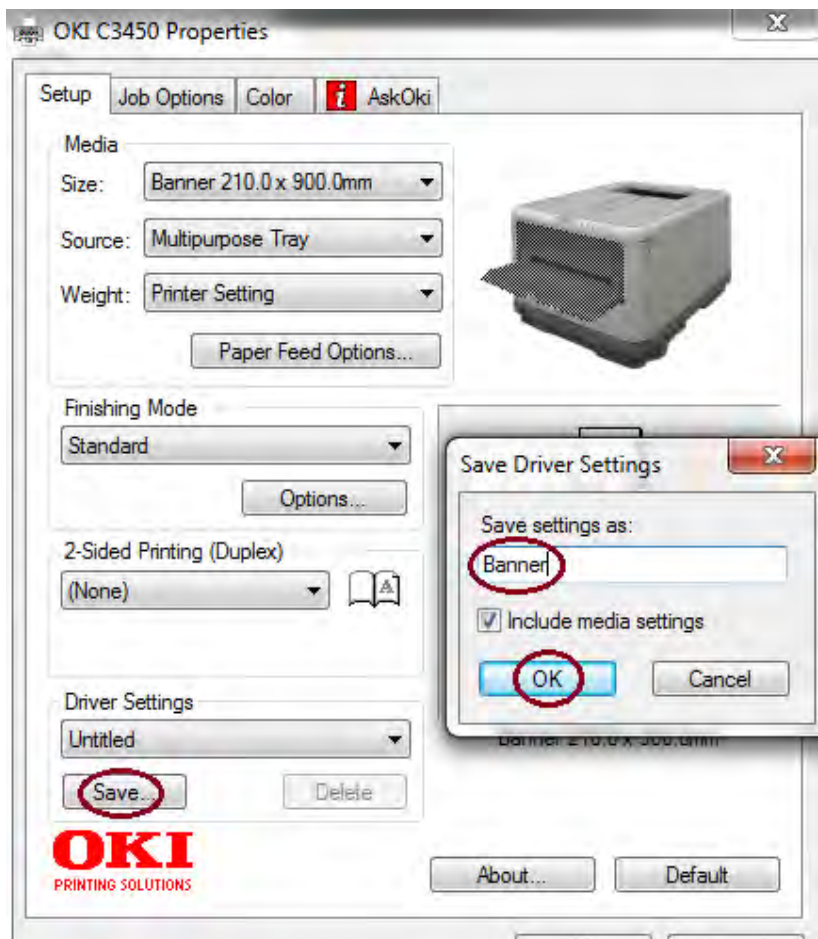
5. Media Source - select Multipurpose Tray from drop down menu
6. Media Size - Select Banner 210.0 x 900.0mm from the drop down menu



90cm Banners:

In the **Job Options** tab:

7. Click Landscape orientation



90cm Banners:

8. Click back into **Setup**
9. Click **Save** in **Driver Settings**
10. Save as Banner
11. Click OK
12. Click OK out of Properties Screen
13. Click OK to print

NOTE: Banner size has now been added to your OKI properties. When printing your next banner simply go to the drop down menu in **Driver Settings** and choose Banner.